



DF-IM™

DOWN FILL BRACKET

ONE SYSTEMS®

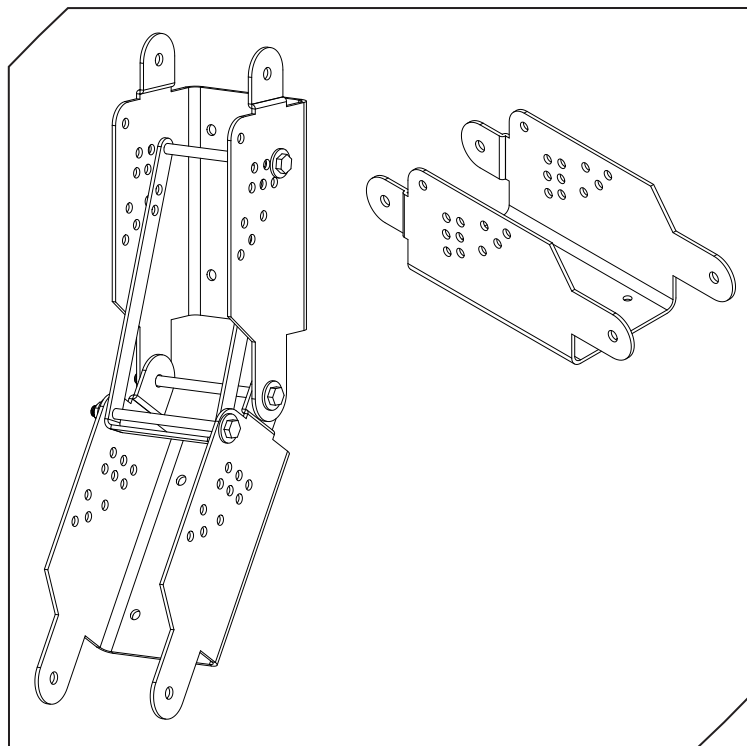
The ONE SYSTEMS® 112IM™ and 212CIM™ sound reinforcement enclosures may be suspended below the 212IM™ or 112IM and 212CIM enclosures to provide down fill coverage.

All components of the DF-IM™ are constructed of high quality stainless steel and are suitable for outdoor permanent installation as well as for indoor applications.

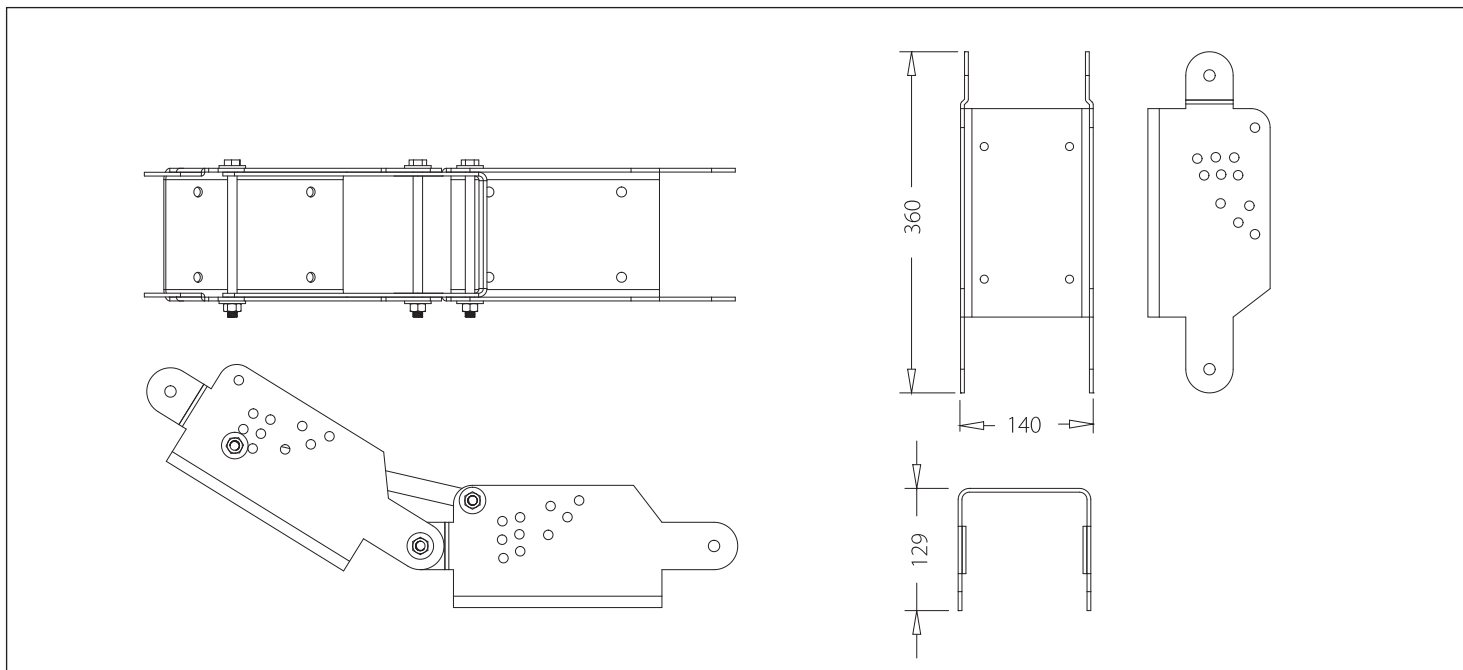
In a typical installation a ONE SYSTEMS 212IM enclosure is suspended and the ET-60/40 high frequency horn is utilized to provide medium to long throw venue coverage. A DF-IM down fill bracket is installed and will allow, as an example, a 112IM with an ET-105/60 high frequency horn to be used as a down fill enclosure. Another example is that of two 112IM enclosures, the top 112IM enclosure configured with an ET-60/40 and the lower 112IM enclosures configured with an ET-105x60 high frequency horn.

The DF-IM is designed for use with ONE SYSTEMS 112IM enclosures as the lower enclosure and either 212IM or 112IM enclosures as the upper enclosure. No substitutions are allowed.

Complete installation of the DF-IM (DF-IM down fill instructions) may be found on the ONE SYSTEMS Web site. (www.onesystems.com).



It is necessary that the installation and application of all suspended products conform to local and national codes. Installation of the DF-IM should only be attempted by an experienced professional that is familiar with local and national codes and safe suspension practices. ONE SYSTEMS also requires that the document "Rigging and Suspension of ONE SYSTEMS Products" be read and completely understood. This document is available at www.onesystems.com



ONE SYSTEMS USA, Inc • 6204 Gardendale Dr. • Nashville, TN 37215
ONE SYSTEMS Group- European Division • Mittelsmoorer Strasse 12 • 28879 Grasberg Germany
ONE SYSTEMS Global Co. Ltd. • 87/114 Modern Town 15th Floor • Sukhumvit 63 Ekkamai Soi 3
Klongtoey, Bangkok 10110 Thailand